

Please find instructions below on how to take a cheek sample for a dadcheck® DNA test.



1 Please ensure that the person providing the sample does not drink tea, coffee or any other strong drink at least one hour before sampling.



2 The contents of the kit are:

- Pre-addressed envelope
- Swab brush(es)
- A consent form for each person providing a sample
- Glove(s)



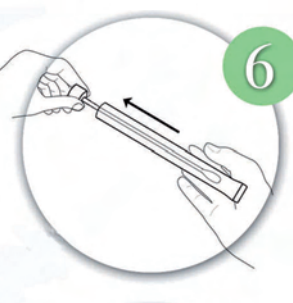
3 Please fill in the consent form, providing all the information requested. We cannot process your order until the full and correct information is provided to us.



4 Please ensure you wash your hands thoroughly with soap and water.



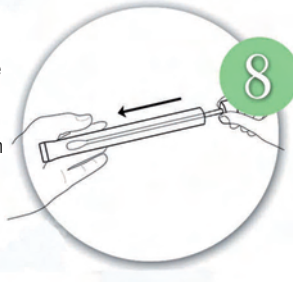
5 Please put the glove (provided in the sample kit) on the hand which you will be using to take the sample.



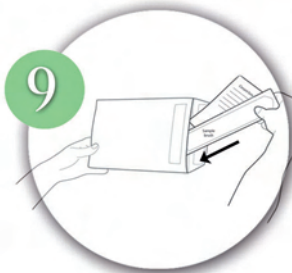
6 Carefully open the swab brush container and take out the swab brush, being careful not to touch its tip.



7 Gently insert the swab brush into the mouth of the person providing the sample and rub no less than 10 times around each cheek in a circular motion.



8 Carefully place the swab brush back into its container.



9 Please insert the swab(s) and your completed consent form(s) into the pre-addressed envelope.



10 Post the envelope back to us. The envelope will be correctly addressed. We recommend you choose to send the pack via recorded delivery.